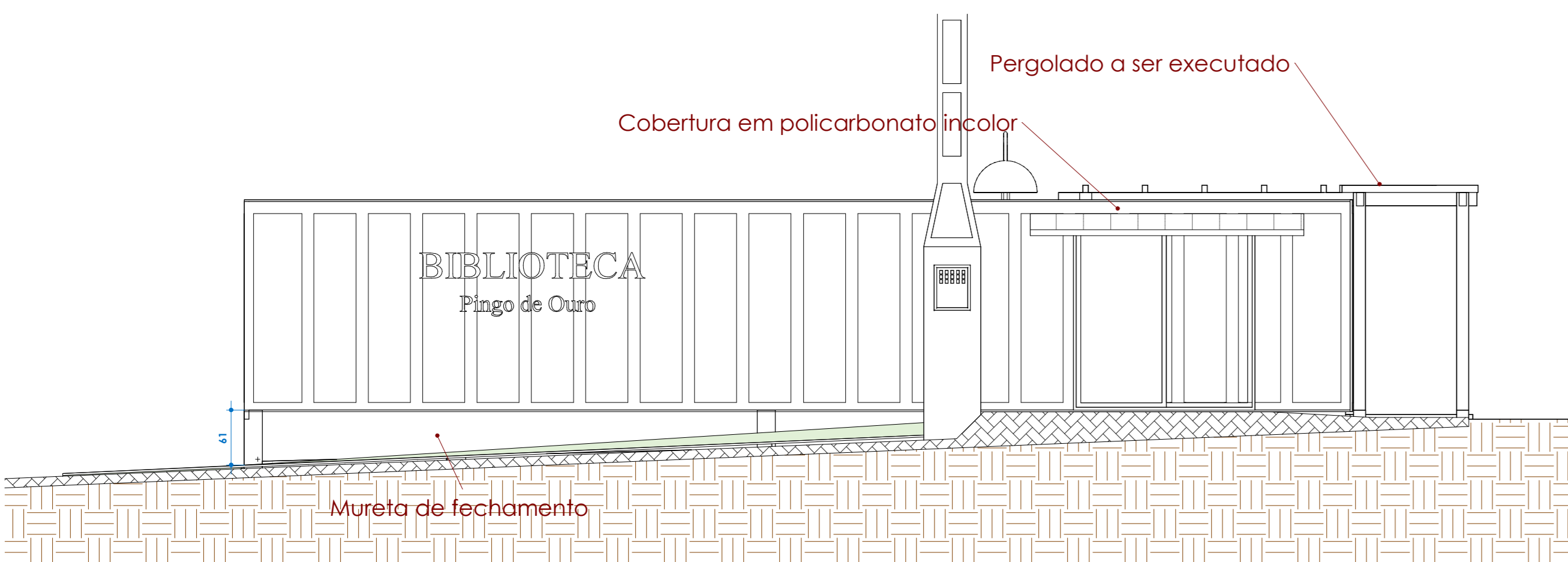
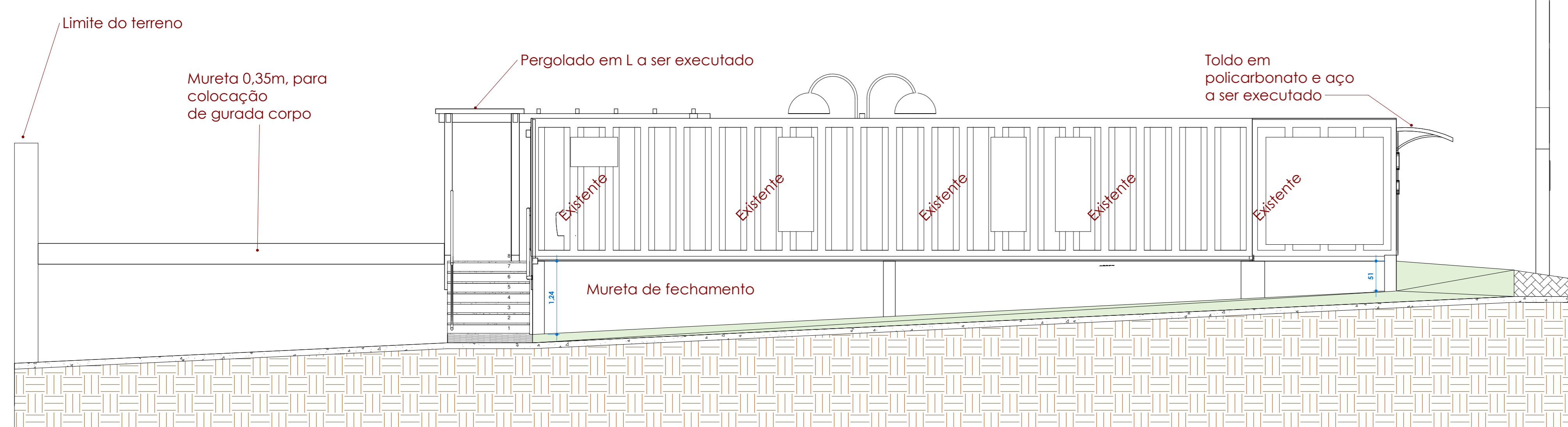


5 Corte 11
1:25

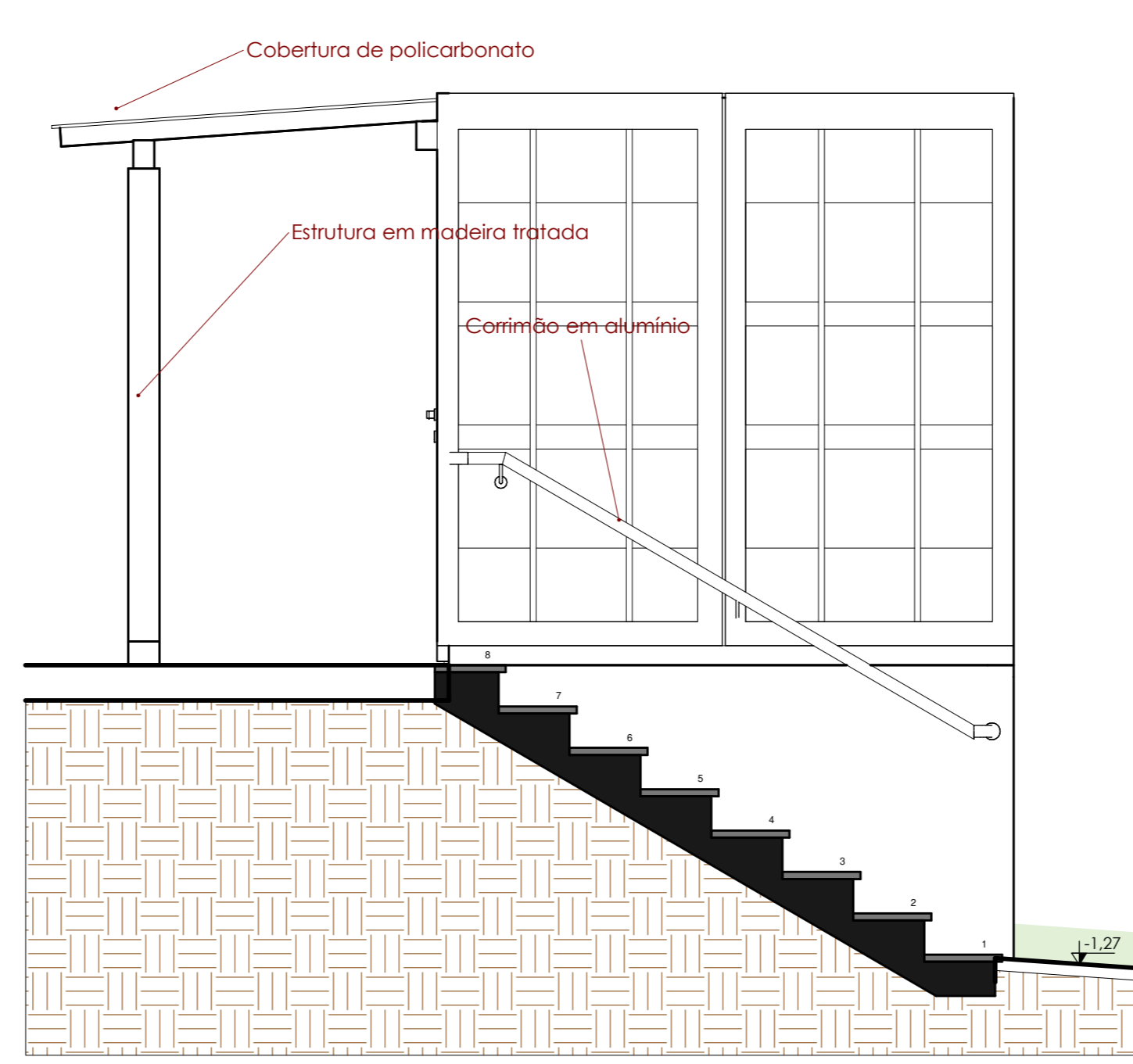
8 IMPLANTAÇÃO
1:1000



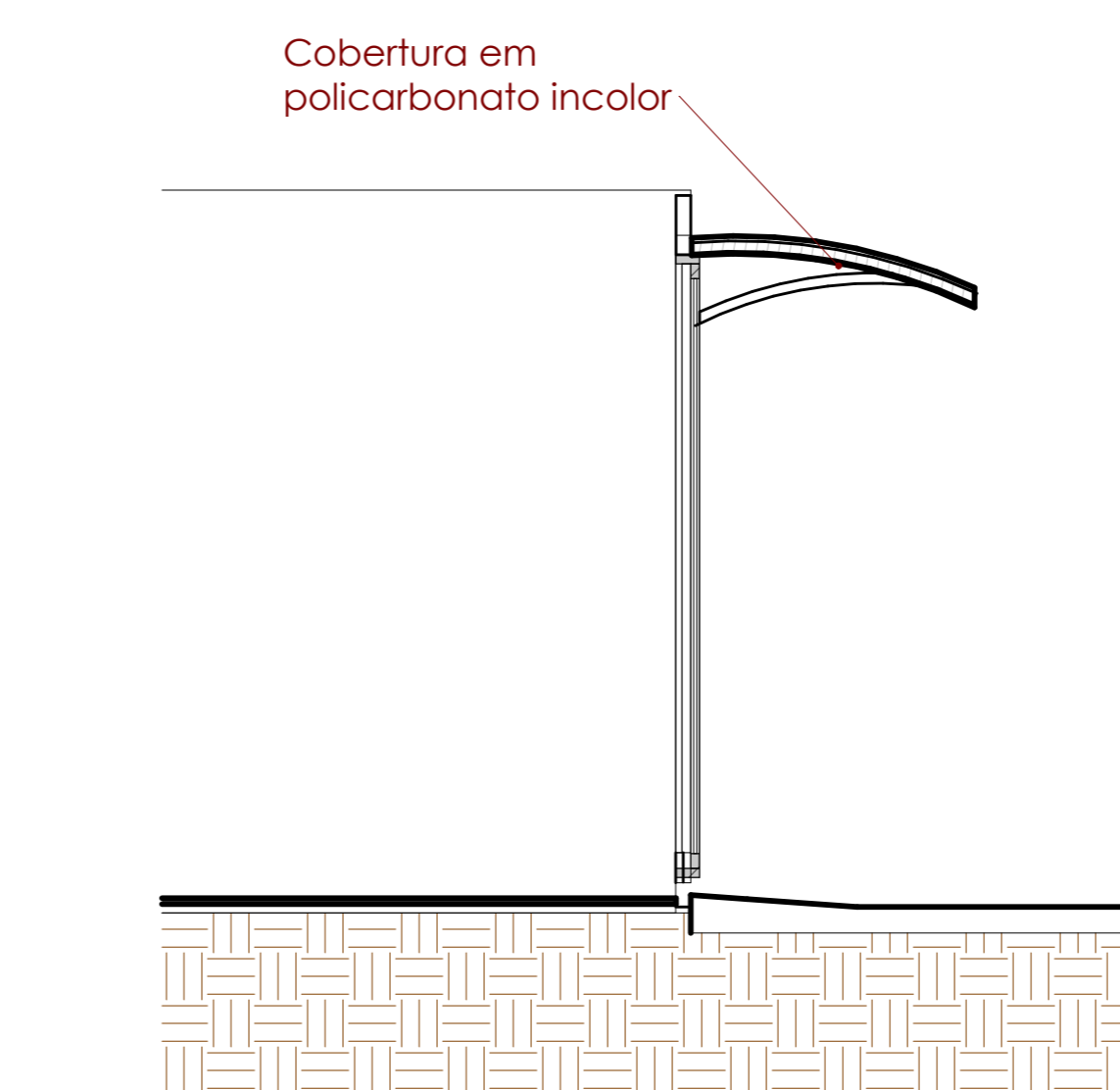
4 Corte 2
1:50



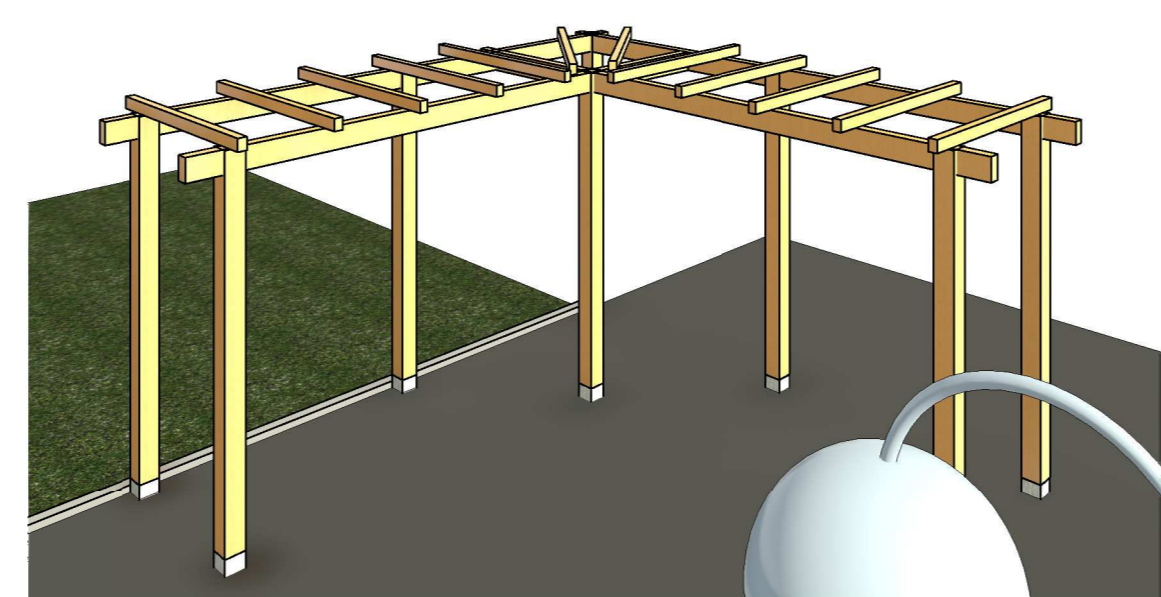
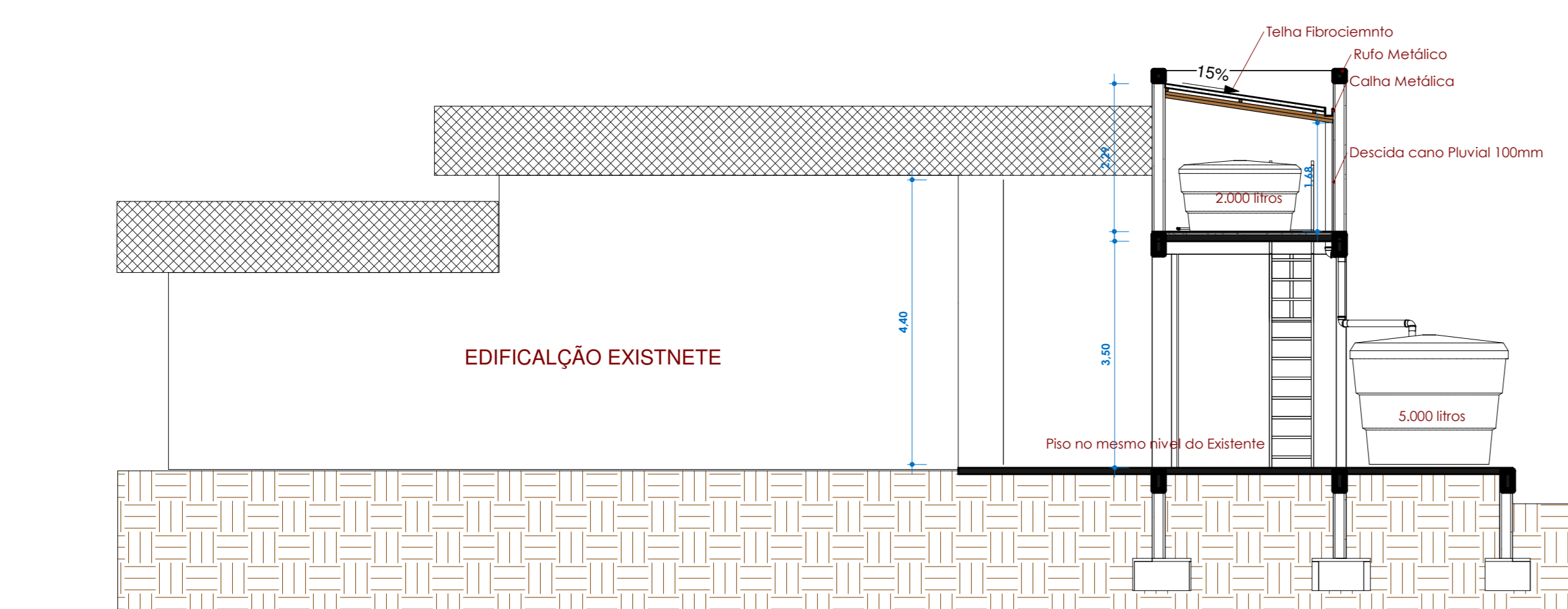
3 Corte 1
1:50



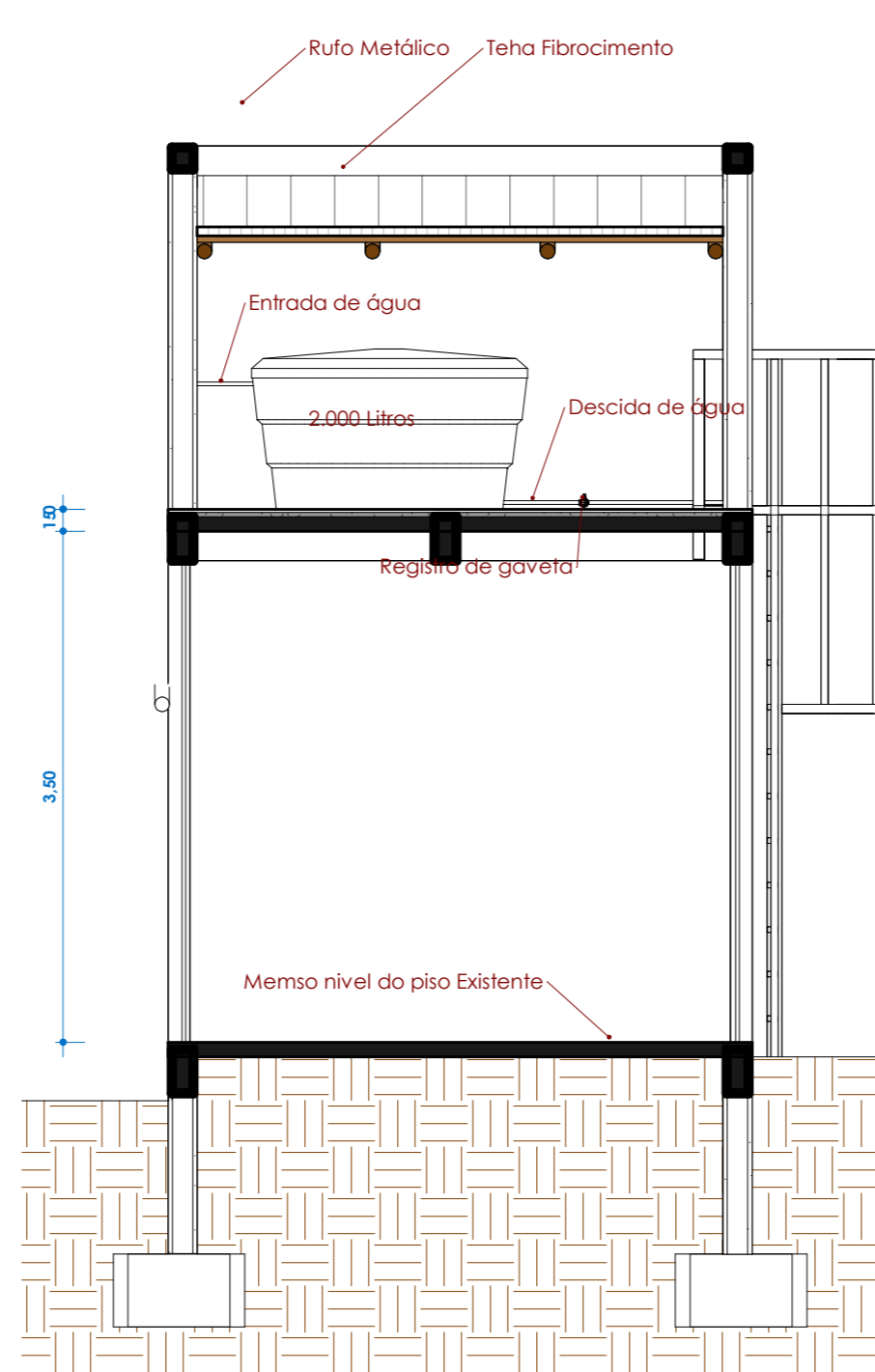
2 Corte C
1:25



9 Corte 4
1:25

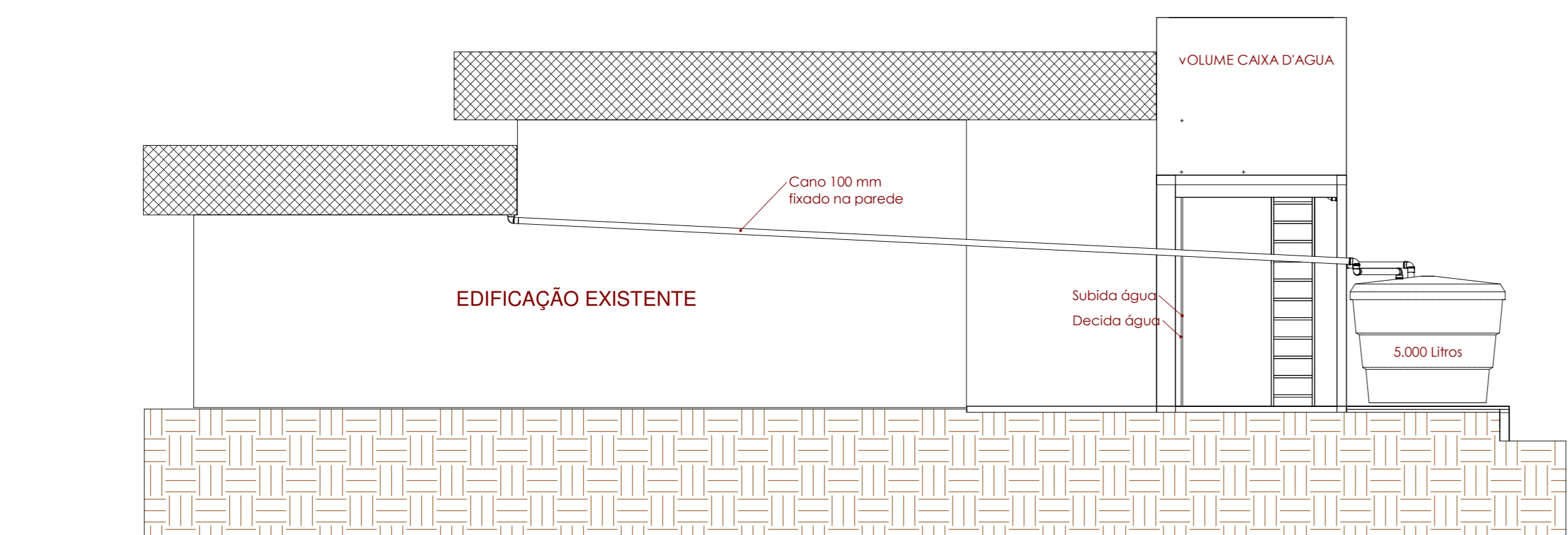


10 Visão 3D 12



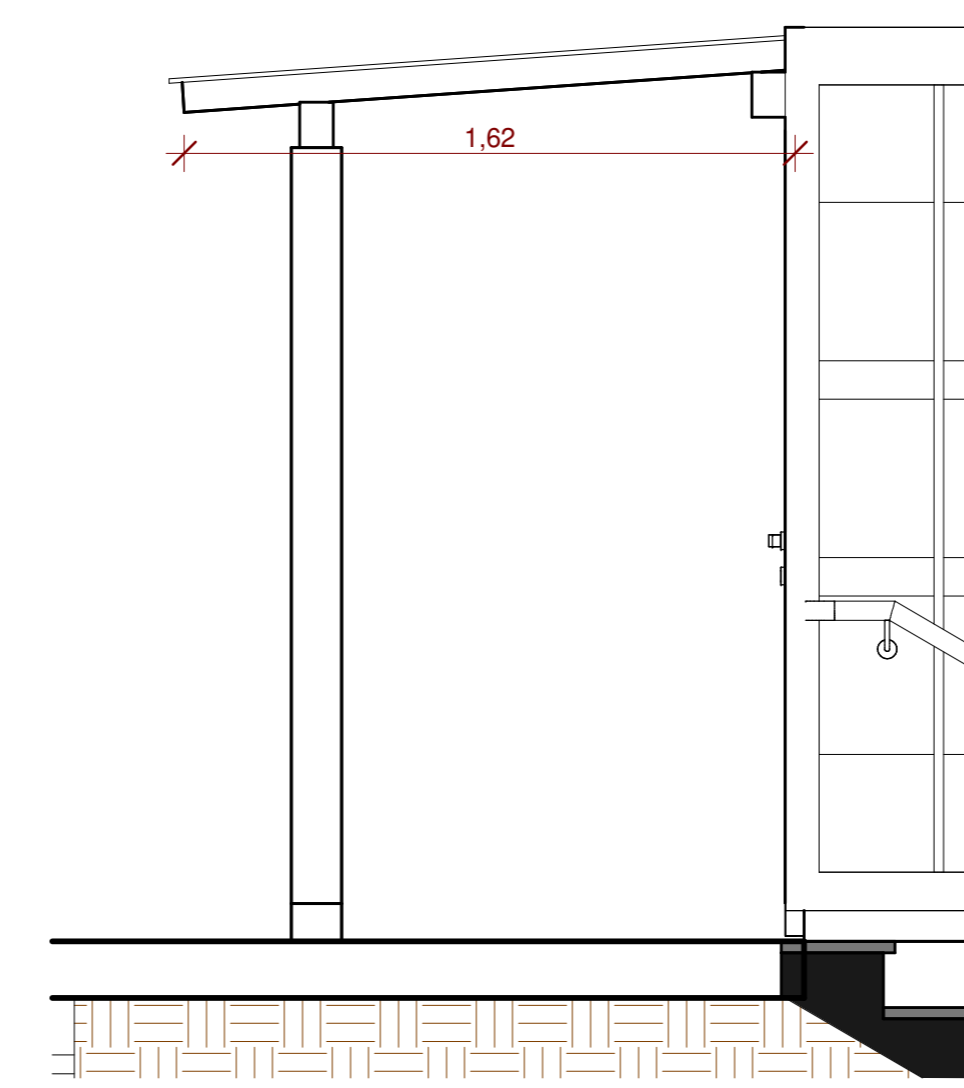
12 Corte 15
1:50

13 Corte 17
1:75

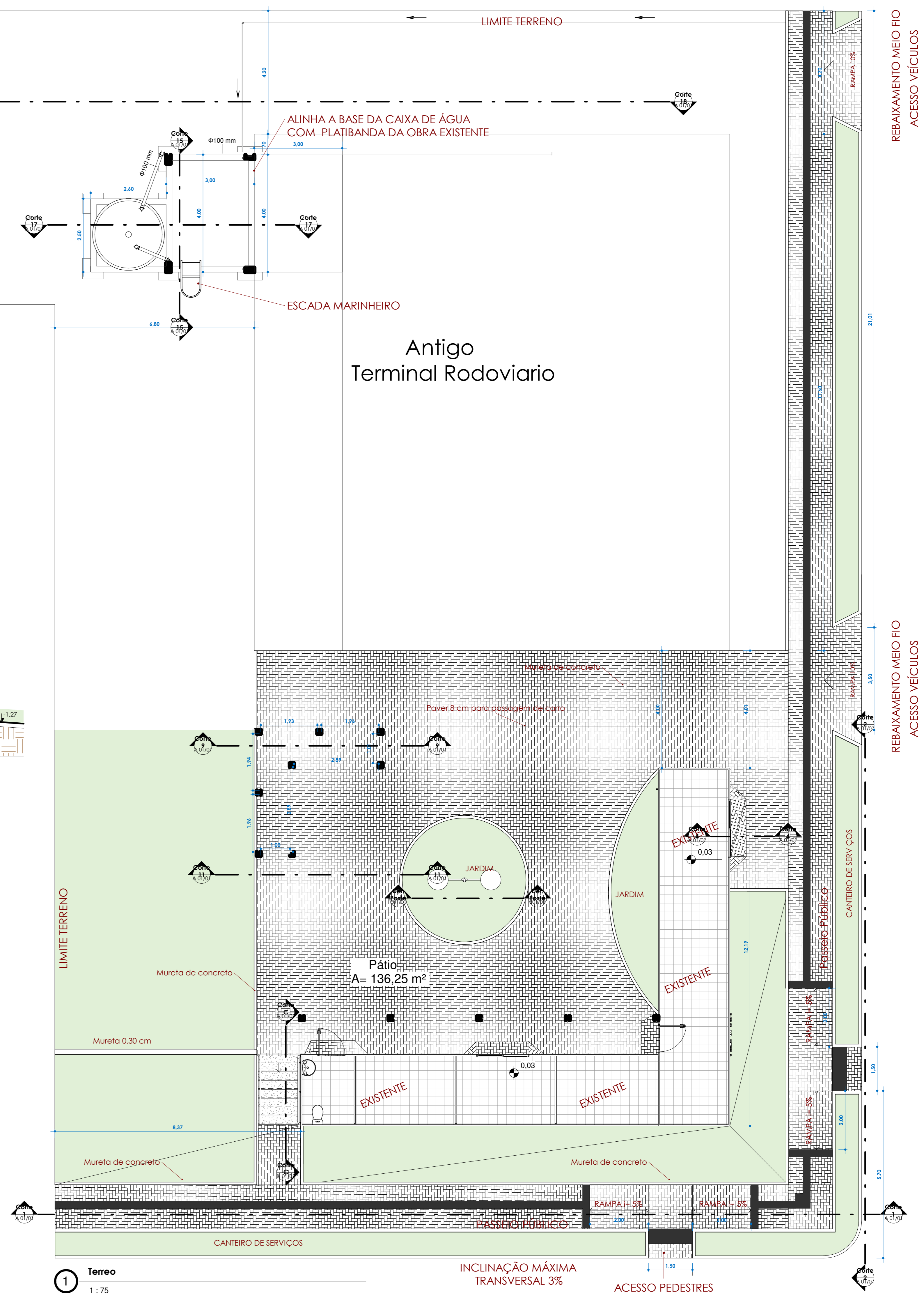


14 Corte 18
1:75

Cobertura em policarbonato fume 1cm a ser executado

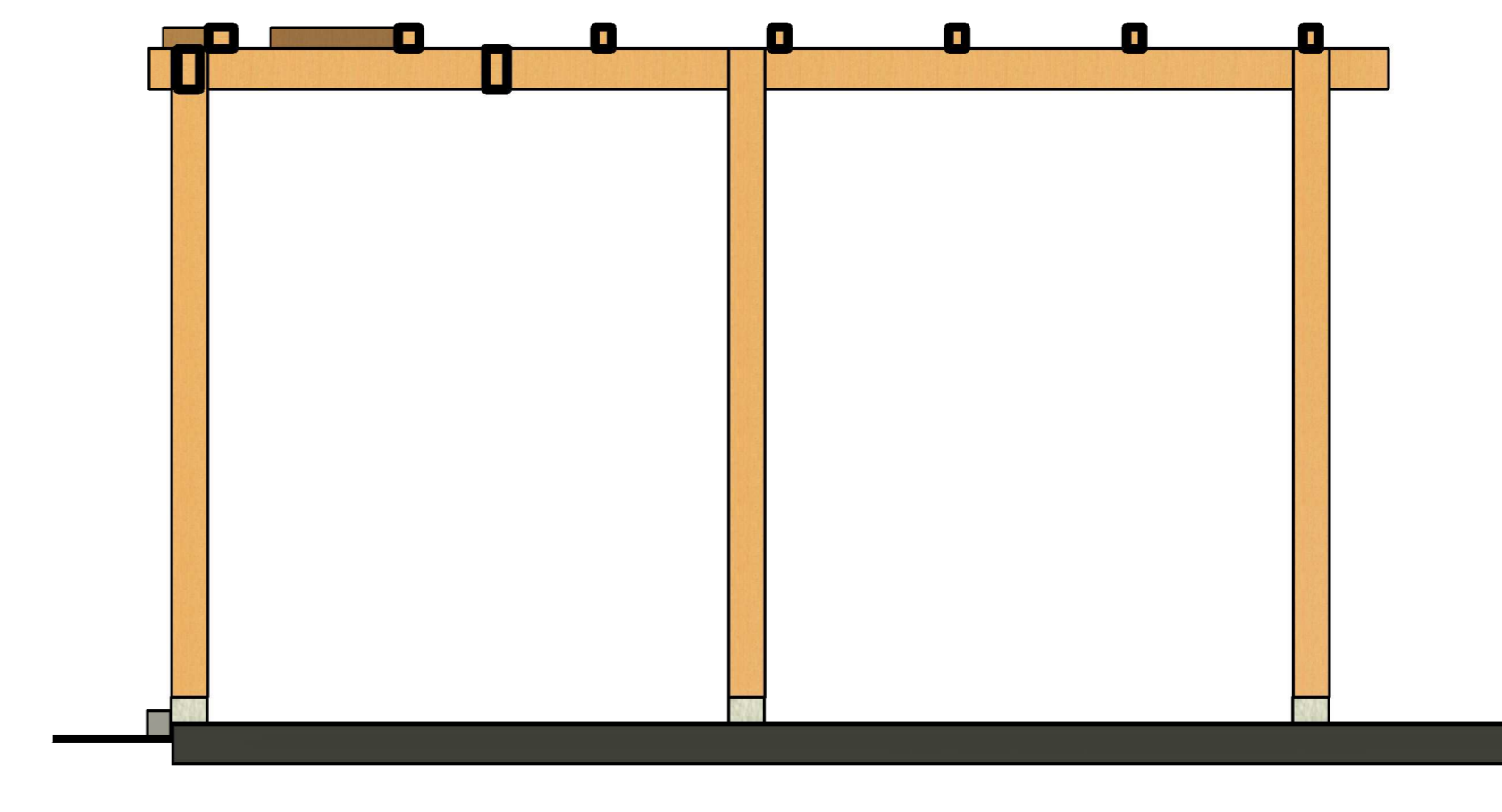


6 Corte 3
1:20



1 Terreo
1:75

7 Corte 9
1:25



ORGÃOS PÚBLICOS:			
PREFEITURA MUNICIPAL BELMONTE - SC			
Projeto:	ARQUITETÔNICO	ÁREA:	476,50m ²
Obra:	Área dos Containers	ESCALA:	Como indicado
Local:	Esq Rua Peperi com Rua Jesus de Baiatata	DATA:	12/09/2022
Cidade:	Belmonte	DESENHO:	Rodrigo Grassioli
Estado:	Santa Catarina	RESPONSÁVEL TÉCNICO:	RODRIGO ALBERTO GRASSIOLI ARQUITETO E OBRATEIRO - CREA: 43588-4 ENGENHEIRO DE SEGURANÇA DO TRABALHO
PROPRIETÁRIO:	PREFEITURA MUNICIPAL DE BELMONTE CNPJ: 80.912.108/0001-90	Nº FOLHA:	A 01/01